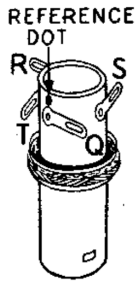


REFERENCE DOT

ANTENNA COIL
502499



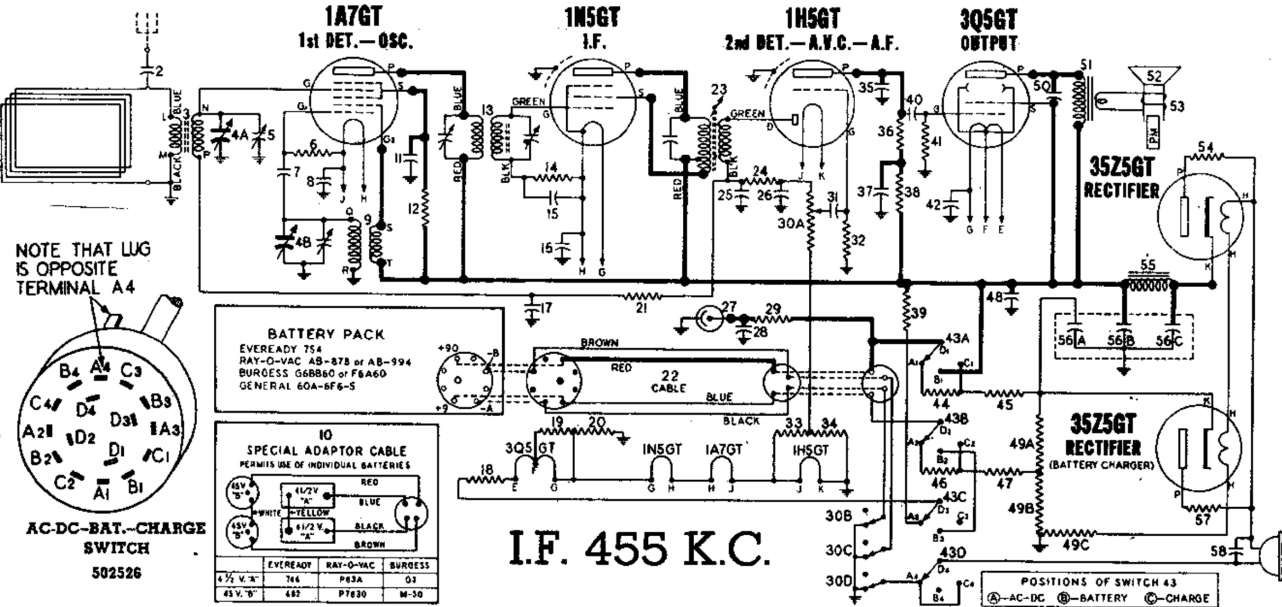
REFERENCE DOT

OSC. COIL
502498

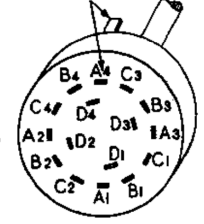
Lettered terminals in illustrations correspond to similarly lettered terminals on the circuit diagram.

PARTS LIST

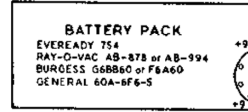
DIA-GRAM NO.	PART NO.	DESCRIPTION	LIST PRICE
CONDENSERS			
2	502150	Condenser—.004 Mfd. 600 volt.....	\$0.20
4-A, B	502494	Condenser—variable gang.....	4.80
5	119132	Condenser—trimmer 2 to 15 Mmfd.....	.36
7	502159	Condenser—mica 50 Mmfd. 500 volt.....	.24
8	502153	Condenser—.05 Mfd. 200 volt.....	.24
11	502547	Condenser—electrolytic 4 Mfd. 150 volt.....	.75
15	502153	Condenser—.05 Mfd. 200 volt.....	.24
16	502155	Condenser—.1 Mfd. 200 volt.....	.30
17	502153	Condenser—.05 Mfd. 200 volt.....	.24
25, 26	502159	Condenser—mica 50 Mmfd. 500 volt.....	.24
28	502155	Condenser—.1 Mfd. 200 volt.....	.30
31	502156	Condenser—.004 Mfd. 400 volt.....	.20
35	502160	Condenser—mica 110 Mmfd. 500 volt.....	.24
37	502155	Condenser—.1 Mfd. 200 volt.....	.30
40	502151	Condenser—.01 Mfd. 400 volt.....	.20
42	502527	Condenser—electrolytic 50 Mfd. 25 volt.....	1.10
48	502155	Condenser—.1 Mfd. 200 volt.....	.30
50	502453	Condenser—.002 Mfd. 400 volt.....	.20
56-A, B, C	500714	Condenser—electrolytic A—20 Mfd. 150 volt B—20 Mfd. 200 volt C—20 Mfd. 200 volt.....	1.70
58	502153	Condenser—.05 Mfd. 200 volt.....	.24
RESISTORS			
6	502133	Resistor—carbon 220,000 ohms 1/4 watt.....	.12
12	502131	Resistor—carbon 47,000 ohms 1/4 watt.....	.12
14	502135	Resistor—carbon 10 Meg. 1/4 watt.....	.12
18	502455	Resistor—carbon 27 ohms 1/4 watt.....	.12
19	502457	Resistor—carbon 330 ohms 1/4 watt.....	.12
20	502458	Resistor—carbon 430 ohms 1/4 watt.....	.12
21	502269	Resistor—carbon 3.3 Meg. 1/4 watt.....	.12
24	502132	Resistor—carbon 100,000 ohms 1/4 watt.....	.12
29	502269	Resistor—carbon 3.3 Meg. 1/4 watt.....	.12
30-A, B, C, D	502525	Volume control (with switch) 1 Meg.....	1.25
32	502269	Resistor—carbon 3.3 Meg. 1/4 watt.....	.12
33, 34	502456	Resistor—carbon 220 ohms 1/4 watt.....	.12
36	502268	Resistor—carbon 1 Meg. 1/4 watt.....	.12
38	502134	Resistor—carbon 470,000 ohms 1/4 watt.....	.12
39	500712	Resistor—wire wound 1830 ohms 5 watt.....	.55
41	502135	Resistor—carbon 2.2 Meg. 1/4 watt.....	.12
44	502266	Resistor—carbon 15,000 ohms 1/4 watt.....	.12
45	502459	Resistor—carbon 8800 ohms 1/4 watt.....	.12
46	502457	Resistor—carbon 330 ohms 1/4 watt.....	.12
47	502455	Resistor—carbon 27 ohms 1/4 watt.....	.12
49-A, B, C	500715	Resistor—wire wound A—1460 ohms 10 watt B—155 ohms 1 watt C—310 ohms 10 watt.....	1.65
54	502454	Resistor—wire wound 47 ohms 1 watt.....	.16
57	502454	Resistor—wire wound 47 ohms 1 watt.....	.16



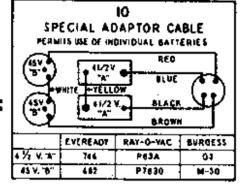
NOTE THAT LUG IS OPPOSITE TERMINAL A4



AC-DC-BAT.-CHARGE SWITCH
502526



BATTERY PACK
EVEREADY 754
RAY-O-VAC AB-378 or AB-394
BURGESS 66B66 or F6A60
GENERAL 60A-8F6-S



SPECIAL ADAPTOR CABLE
PERMITS USE OF INDIVIDUAL BATTERIES

I.F. 455 K.C.

DIA-GRAM NO.	PART NO.	DESCRIPTION	LIST PRICE
COILS AND TRANSFORMERS			
3	502499	Coil—antenna coupling.....	\$1.70
9	502498	Coil—oscillator.....	1.05
13	500749	Transformer—1st I.F.....	2.30
23	502902	Trans.—output for A-502491 speaker.....	2.30
51	502902	Trans.—output for R-502491 speaker.....	2.50
55	502528	Filter choke.....	2.35
OTHER ELECTRICAL PARTS			
10	500746	Cable—for use with individ. batteries.....	1.60
22	502536	Cable—for use with battery pack.....	.85
27	500713	Neon indicator lamp.....	.75
43-A, B, C, D	502526	Switch—"AC-DC-BAT.-CHARGE".....	1.50
52	502901	Cone & voice coil for A-502491 speaker.....	2.00
53	502493	Cone & voice coil for R-502491 speaker.....	2.00
53	502491	Speaker—P.M. dynamic (5 inch).....	7.70
MISCELLANEOUS PARTS			
1600226		Base for intg. electrolytic condenser.....	.04
112745		Clip—coil mtg.....	.01
114955		Clip—retainer on end of dial cord.....	.01
117057		Cord—dial drive (28" required) per ft.....	.05
502549		Escutcheon plate.....	2.42
502544		Knob—volume or tuning.....	.10
502545		Knob—"AC-DC-BAT.-CHARGE".....	.12
500747		Plug for battery cable (fits chassis).....	.10
502537		Plug for battery cable (fits batt. pack).....	.16
502546		Pointer.....	.16
81145		Retaining ring for tuning shaft.....	.01
119087		Ring for dial cord.....	.01
79894		Screw—No. 8x3/8"; for mtg. chassis.....	.01
502524		Shaft—tuning control.....	.10
117716		Shield—tube.....	.07
116690		Socket—octal base.....	.12
500681		Socket—for battery cable.....	.10
161384		Spring—dial cord tension.....	.06
502533		Terminal strip for antenna.....	.20
111456		Washer—spring washer for tuning shaft.....	.005
502534		Washer—felt; for knobs.....	.01

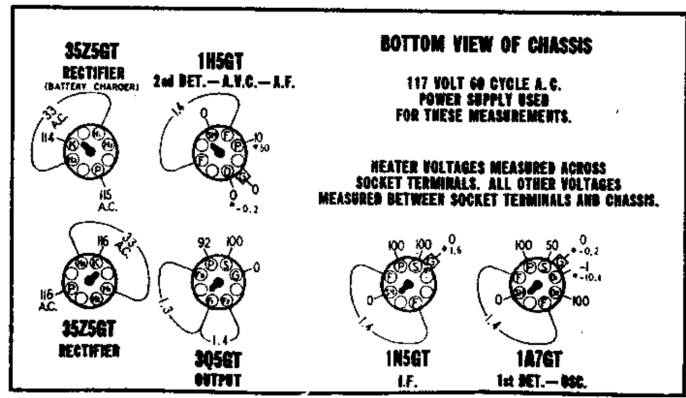
PRICES SUBJECT TO CHANGE WITHOUT NOTICE

SOCKET VOLTAGES

Measured with voltmeter having sensitivity of 1000 ohms per volt except where indicated by (*).

VOLUME ON FULL WITH NO SIGNAL DIAL TUNED TO 540 KC.

"AC-DC-BAT.-CHARGE" SWITCH IN "AC-DC" POSITION.



REAR OF CHASSIS

*—Measured with vacuum tube voltmeter.

PHILLIPS PETROLEUM CO.

PHILLIPS PAGE 15-9
MODEL 3-4A